



Product Description

Poppet type design for low leakage

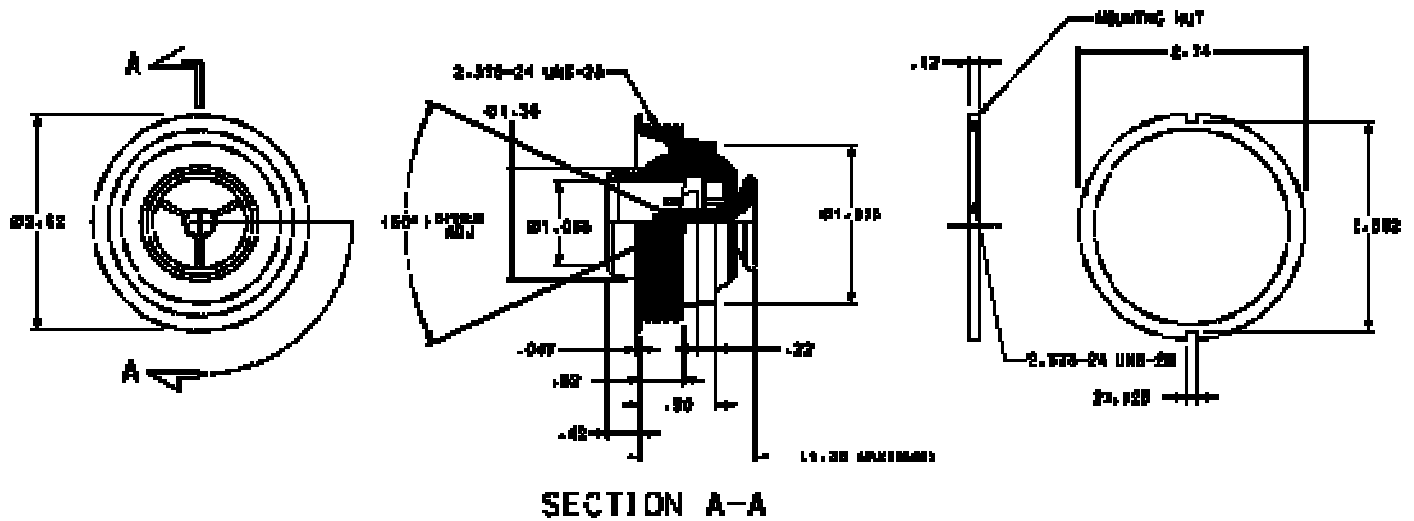
Durable aluminum construction of ball, collar and flange

Injection molded black nozzle and poppet

1.06 inch inside diameter nozzle

Recessed ball for reduced cabin protrusion

Mounting nut type installation



The AV4031 poppet type air valve is designed to provide high air flow volumes at low duct pressures and has minimal leakage in the closed position. The recessed ball reduces cabin protrusion which makes the air valve well suited for passenger cabin and crew area installations. The nozzle is provided in black plastic to reduce condensation and weight.

14321 Commerce Drive
Garden Grove CA, 92843

Phone: 714-554-9782
Fax: 714-554-3659
www.birkaero.net

