



Product Description

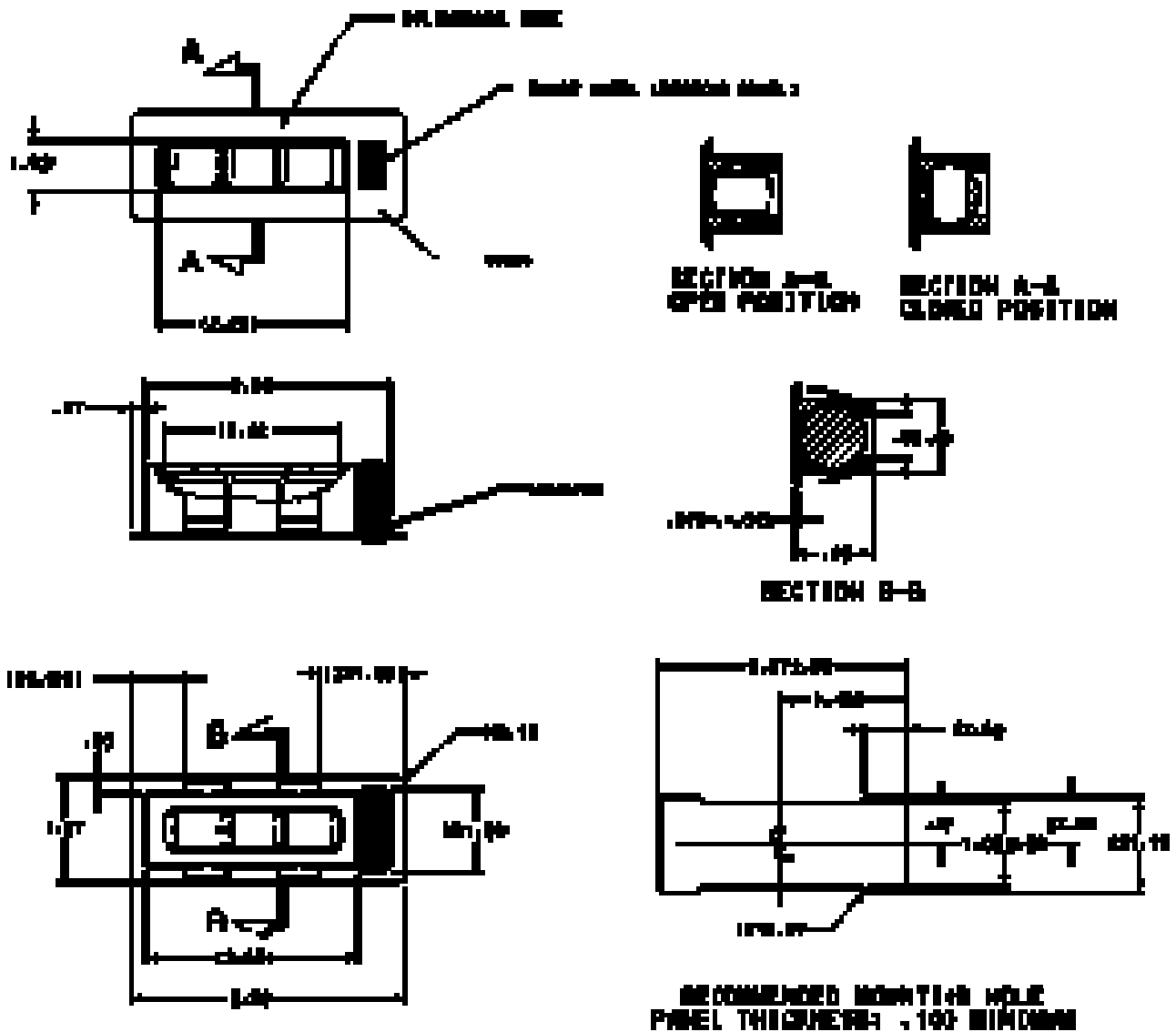
Durable black anodized rectangular air valve

Thumb wheel design for easy opening/closing

Low profile flush mounting

Wide air flow pattern

Snap-in installation



The rectangular type air valve is a narrow low profile design well suited for installation in galley and crew areas where additional air flow is required. Rotating the thumb wheel rotates the vane housing which opens/closes the air valve as well as controls the volume of air flow. Angle vanes within the housing provide side to side direction of the air pattern. The air valve is available in clear or black anodized finish. Stainless steel mounting clips at each end of the air valve permit snap-in type installation.

14321 Commerce Drive
Garden Grove CA, 92843

Phone: 714-554-9782
Fax: 714-554-3659
www.birkaero.net